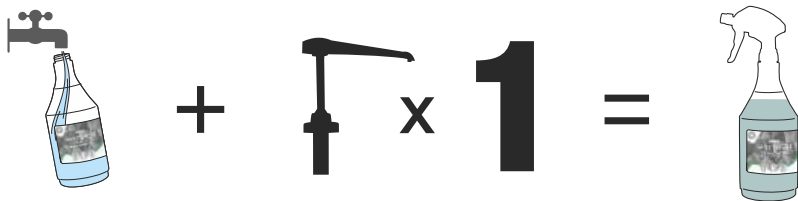


LUFRA

SAN FOREST

A concentrated fragranced daily cleaner/ disinfectant suitable for use on all hard surfaces.

DILUTION RATE



METHOD OF USE



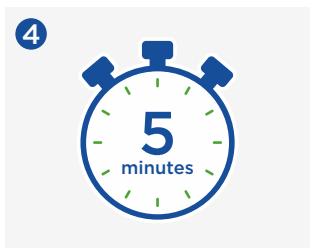
1 Fill an empty trigger bottle with 600ml of clean water.



2 Add 1 shot (30ml) of Lufra San Forest to the trigger bottle.



3 Spray diluted Lufra San Forest onto the area and work into the surface with a cloth.



4 For efficacy against bacteria, allow a 5 minute contact time on the surface.



5 Wipe away with a clean cloth. Leave the surface to air dry.

EFFICACY STANDARDS

BACTERICIDAL - EN 1276

CONTACT TIME	DILUTION	KILL RATE
5 Minutes	1 : 23	99.999%

All testing methods conducted in dirty conditions by an independent laboratory.

Use biocides safely. Always read the label and product information before use.

PRODUCT INFO



Pack Size:	5L
Product Code:	204
Odour:	Pine, Fresh
Colour:	Green
pH (undiluted):	6-8
Shelf life:	2 years



For Health & Safety information, please scan the QR code provided.

THINK SAFE, CLEAN GREEN

Christeyns Professional Hygiene UK Ltd | Clover House | Whaley Bridge
SK23 7DQ | T +44 (0) 1663 733 114 | W www.christeyns-ph.co.uk

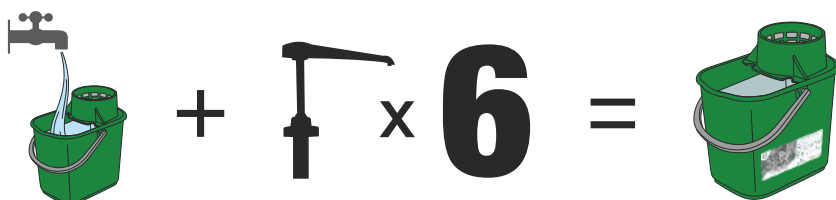

CHRISTEYNS
PROFESSIONAL HYGIENE

LUFRA

SAN FOREST

A concentrated fragranced daily cleaner/ disinfectant suitable for use on all hard surfaces.

DILUTION RATE



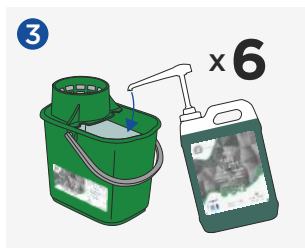
METHOD OF USE



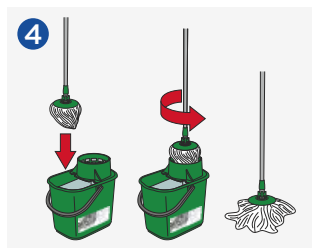
Place a wet floor sign in the area to be cleaned.



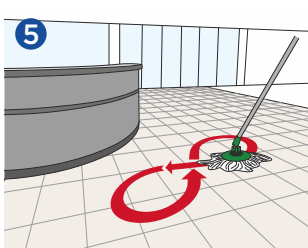
Fill an empty bucket with 5 litres of clean water.



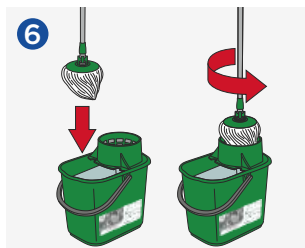
Dispense 6 pumps (180ml) of Lufra San Forest into the bucket.



Immerse the clean mop head into the bucket of Lufra San Forest solution and wring out the mop thoroughly.



Apply the mop to the floor and wipe in a figure of 8 motion, working the mop side to side.



Clean the dirty mop head in the bucket and repeat the previous steps until the floor is clean. Allow to air dry for a streak-free finish.

EFFICACY STANDARDS

BACTERICIDAL - EN 1276

CONTACT TIME	DILUTION	KILL RATE
5 Minutes	1 : 23	99.999%

All testing methods conducted in dirty conditions by an independent laboratory.

Use biocides safely. Always read the label and product information before use.

PRODUCT INFO



Pack Size: 5L
Product Code: 204
Odour: Pine, Fresh
Colour: Green
pH (undiluted): 6-8
Shelf life: 2 years



For Health & Safety information, please scan the QR code provided.

THINK SAFE, CLEAN GREEN

Christeyns Professional Hygiene UK Ltd | Clover House | Whaley Bridge
SK23 7DQ | T +44 (0) 1663 733 114 | W www.christeyns-ph.co.uk


CHRISTEYNS
PROFESSIONAL HYGIENE



DISINFECTANTS

LUFRA SAN FOREST

DAILY CLEANER & DISINFECTANT



- CONCENTRATED FORMULA
- EFFECTIVE AGAINST BACTERIA AND YEAST
- FOREST/PINE FRAGRANCE

PRODUCT DESCRIPTION

LUFRA SAN FOREST is a cleaner and disinfectant with a fresh forest/pine fragrance. LUFRA SAN FOREST is a powerful disinfectant which can be used daily on all hard surfaces including stainless steel.

Ideal to clean and disinfect toilets, urinals, washroom surfaces, floors, tables, door handles, handrails, bedsteads, desks, sunbeds, sports equipment, etc.

Recommended for a variety of uses in hotels, nightclubs, public houses, conference centres, public rooms and public buildings, nursing homes, retirement homes, airports, department stores, shops, ships, boats and ferries.

EFFICACY

A concentrated cleaner-disinfectant. LUFRA SAN FOREST has been tested against a range of standards, at a dilution as shown below by an independent laboratory.

STANDARD	DILUTION RATE	CONDITIONS	CONTACT TIME	PASSED
<u>Bactericidal</u>				
EN 1276	1:23 (4.2%)	Dirty	5 Minutes	≥5 log reduction
EN 13697	1:23 (4.2%)	Dirty	5 Minutes	≥5 log reduction
<u>Yeasticidal</u>				
EN 13697	1:23 (4.2%)	Dirty	5 Minutes	≥4 log reduction
EN 1650	1:23 (4.2%)	Dirty	5 Minutes	≥3 log reduction

INSTRUCTIONS FOR USE

Dilute with water. Mop, spray or scrub with LUFRA SAN FOREST. Allow the contact time shown in the table and then wipe away with a clean cloth. Leave the surface to air dry.

Use biocides safely. Always read the label and product information before use.

DILUTION RATE

Cleaning, Deodorising & Sanitising (Bacteria and Yeast)	1:23 (4.2%)
---	-------------

ADDITIONAL INFORMATION

Product Code:	204
pH Level:	6-8

STORAGE

Use above 5°C. Store preferably above 0°C.

PACKAGING

Jerry Can	5 Litre
-----------	---------

NON WARRANTY

This information is based on our current knowledge and is intended to describe the product for the purposes of health, safety and environmental requirements only. It should not therefore be construed as guaranteeing any specific property of the product.

